

Spring 2010 Preview

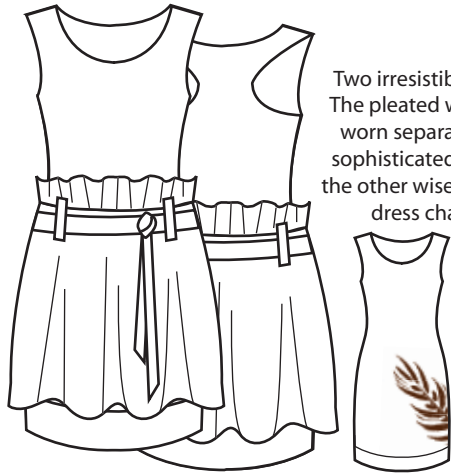


Revelation by M.E.

www.revelationbyme.com

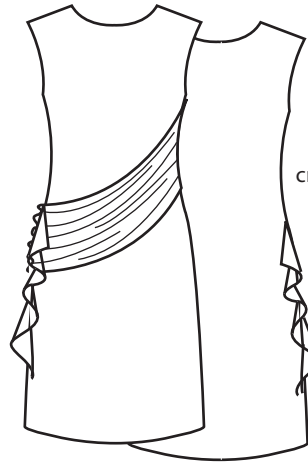
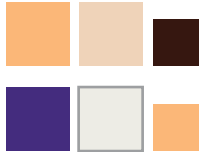


Spring 2010



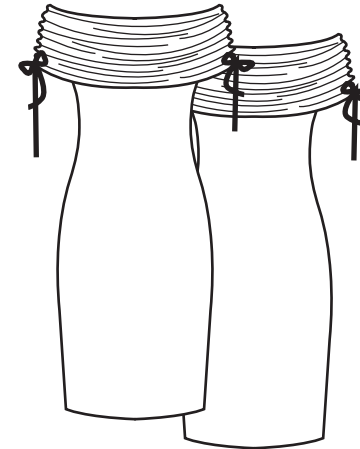
Two irresistible pieces in one. The pleated wrap skirt may be worn separately revealing a sophisticated spring motif on the other wise casual racer-back dress charmeuse trim.

The Yessica
Style # S10D01
Size: S-M-L
95% Modal 5% Spandex
97% Cotton 3% Spandex
Wholesale Price \$56
Colorways



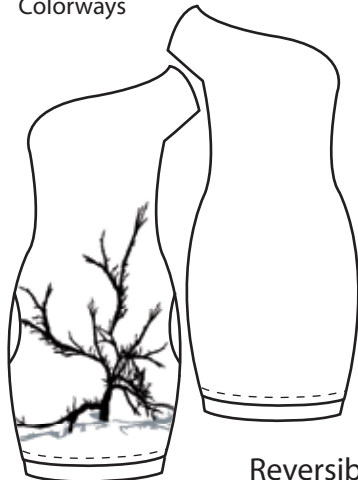
The draped sash may also be attached with broche (included) to the opposite shoulder, creating an asymmetric flutter effect with a ruched cross front.

The Grace
Style # S10D05
Size: S-M-L
95% Modal 5% Spandex
Wholesale Price \$ 42
Colorways



Cinch the side shoulder drawstrings for a ruched off-shoulder front or let them fall for a draped cowl neck top.

The Evelyn
Style # S10D04
Size: S-M-L
95% Modal 5% Spandex
Wholesale Price \$ 38
Colorways



A fashion revelation. Wear it front or back – you choose the shoulder, and reverse it for a whimsical spring pattern or reverse it for a solid color.

The Silké
Style # S10D06
Size: S-M-L
95% Modal 5% Spandex
Wholesale Price \$ 53
Colorways



Reversible



This one shoulder dress with side seampockets can be worn with the one-shoulder ruched wrap for a more feminine touch (the wrap can also be worn separately!)

The Razel
Style # S10D03
Size: S-M-L
95% Modal 5% Spandex
Wholesale Price \$ 52
Colorways



This must have reversible wrap dress will have you undecided on which side to wear! Solid or Printed?

The Ayme
Style # S10J01
Size: S-M-L
95% Modal 5% Spandex
Wholesale Price \$ 60
Colorways

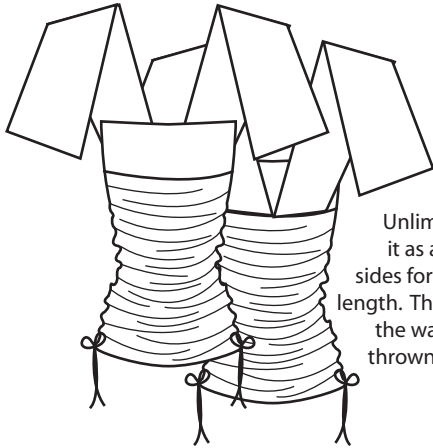


Reversible

Print
TBD

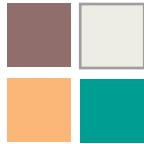
Print
TBD





Unlimited style possibilities. Wear it as a short dress or cinch up the sides for a ruched top – you choose the length. The sashes can be wrapped around the waist, tied around your neck, or thrown over your shoulders as flutter sleeves.

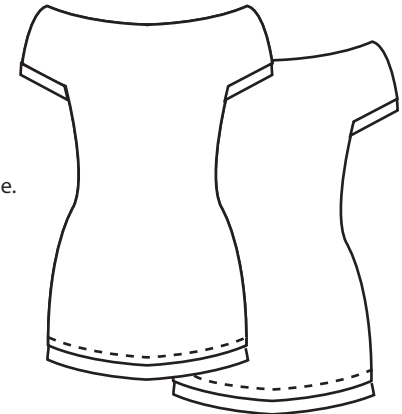
The Linda
Style # S10T01
Size: S-M-L
95% Modal 5% Spandex
Wholesale Price \$ 48
Colorways



These super sexy tees are reversible.
You choose!

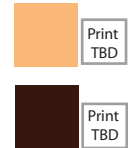
Reversible

The Lorrie
Style # S10T02
Size: S-M-L
95% Modal 5% Spandex
Wholesale Price \$ 30
Colorways



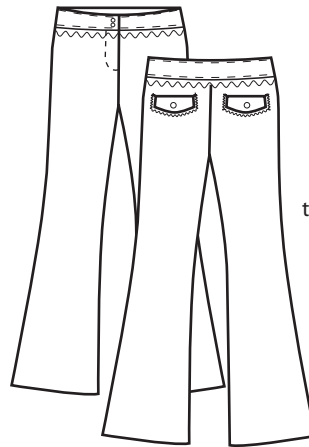
Reversible

The Becky
Style # S10T03
Size: S-M-L
95% Modal 5% Spandex
Wholesale Price \$ 40
Colorways



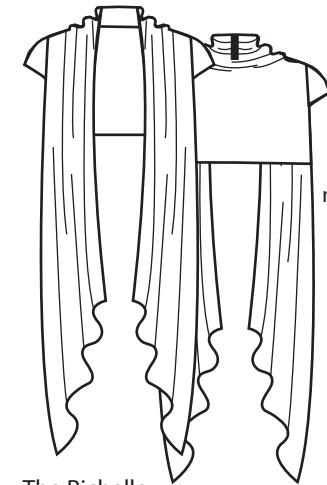
The cutest little booty shorts you'll ever own! Pair it with the Lorrie or Becky tees!

The Jasmine
Style # S10S01
Size: S-M-L
97% Cotton 3% Spandex
Wholesale Price \$ 32
Colorways



These full-length spring trouser feature buttons and tabs on the inner seams. Roll it up to an ankle-length pedal pusher or casual capri.

The Monica
Style # S10P01
Size: S-M-L
97% Cotton 3% Spandex
Wholesale Price \$ 38
Colorways



The easiest spring layer you'll own. The cap sleeves let you feel the new spring warmth while you stay cozy in the long wrap.

The Richelle
Style # S10J01
Size: S-M-L
95% Modal 5% Spandex
Wholesale Price \$ 23
Colorways

